



Komatsu maintenance and repair programs



Importance of maintenance and repair

Ensure your equipment is in peak operating condition and help avoid costly repair with periodic maintenance and repair coverage. All listed programs are manufacturer direct offerings supported by our network of authorized dealers.



Contents

Komatsu maintenance and repair programs	3
Program coverage	4
Complimentary maintenance	5
Extended maintenance	6
Extended maintenance and repair	7
Extended maintenance, repair and consumables	8-9
Extended repair coverage	10-11
Machine coverage	12-15
Financing solutions	16
My Komatsu	17
Komatsu Certified	18
Komatsu Genuine Parts	19
Early cancellation	19
Incremental purchases	19
Useful resources	20

Komatsu maintenance and repair programs



Komatsu Care Complimentary	Komatsu Care Plus	Komatsu Care Plus II	Komatsu Care Plus III	Komatsu Care Advantage
<i>Complimentary maintenance</i>	<i>Extended maintenance</i>	<i>Extended maintenance and repair</i>	<i>Extended maintenance, repair and consumables*</i>	<i>Extended repair coverage</i>
<ul style="list-style-type: none"> • Automatic scheduling • Maintenance parts and fluids • Travel and labor included • KOWA oil analysis • 50-point inspection • Service record history • Eligible for Komatsu Certified 	<ul style="list-style-type: none"> • Automatic scheduling • Maintenance parts and fluids • Travel and labor included • KOWA oil analysis • 50-point inspection • Service record history • Major component assurance • 100% core guarantee • Special financing • Eligible for Komatsu Certified 	<ul style="list-style-type: none"> • Automatic scheduling • Maintenance parts and fluids • Travel and labor included • Genuine parts • KOWA oil analysis • 50-point inspection • Service record history • Comprehensive repair coverage • Diagnostics included • Competitive pricing • Special financing • Eligible for Komatsu Certified 	<ul style="list-style-type: none"> • Automatic scheduling • Maintenance parts and fluids • Travel and labor included • Genuine parts • KOWA oil analysis • 50-point inspection • Service record history • Comprehensive repair coverage • Consumables • Diagnostics included • Competitive pricing • Cost-per-hour billing • Eligible for Komatsu Certified 	<ul style="list-style-type: none"> • Customizable repair coverage • Powertrain — powertrain components only • Powertrain Plus — powertrain and hydraulic systems • Premier — comprehensive machine coverage • Travel and labor included • Genuine parts • Diagnostics included • Service record history • Special financing

*Based on model. Please see your Komatsu dealer for full terms and conditions.

Program coverage

Choose the right maintenance and repair solution to get the most from your investment. We offer several programs to help keep your machine in top condition and reduce downtime that comes with costly repairs. No matter where your business takes you, enjoy peace of mind knowing whatever program you choose, your equipment can always be serviced by any Komatsu distributor across the nation with our guarantees of certified labor and Komatsu Genuine Parts.

Aftermarket segment	Coverage	Komatsu Care Complimentary	Komatsu Care Plus	Komatsu Care Plus II	Komatsu Care Plus III	Komatsu Care Advantage
Scheduled preventive maintenance	Engine oil and filters	●	●	●	●	
	Fuel filters and breathers	●	●	●	●	
	KCCV and DEF filters	●	●	●	●	
	Engine coolant		●	●	●	
	Air cleaner filters		●	●	●	
	Cab recirculation air filters	●	●	●	●	
	Transmission oil, filters and strainers	●	●	●	●	
	Hydraulic oil, filters and strainer	●	●	●	●	
	Powertrain oil	●	●	●	●	
	Certified labor	●	●	●	●	
	Periodic oil samples	●	●	●	●	
	50-point inspection	●	●	●	●	
	Travel	●	●	●	●	
Equipment repairs	Powertrain			●	●	●
	Powertrain and hydraulics			●	●	●
	Premier			●	●	●
	Genuine parts			●	●	●
	Diagnostics			●	●	●
	Certified labor			●	●	●
	Travel			●	●	●
Consumables	Fuel injection system				●	
	Water pump, starter, alternator, batteries				●	
	A/C system				●	
	Equipment cooling system				●	
	Brakes				●	
	Aftertreatment filters				●	
	Seals, hoses, gaskets				●	
	Pins and bushings				●	
	V-belt, wiper blades, wiper motors				●	
Added value	Complimentary	●				
	National coverage	●	●	●	●	●
	Service record retention	●	●	●	●	●
	Komatsu Certified eligibility	●	●	●	●	
	My Komatsu management	●	●	●	●	●
	Komatsu financing		●	●	●	●
	Competitive bundle pricing			●	●	
	100% core guarantee		●			
	Major component assurance		●			
	Cost-per-hour billing		●		●	
	Early cancellation		●	●	●	

Komatsu Care Complimentary

Keep your machine running reliably and running longer with Komatsu Care Complimentary, our complimentary scheduled maintenance program for the first three years or 2,000 hours, whichever occurs first. This program ensures critical maintenance is performed on schedule, helping you lower your cost of ownership, improve equipment uptime and reliability, and increase resale value.



What's included?*

- **Three years/2,000 hours, whichever occurs first**
- Genuine parts and certified labor
- 50-point inspection by certified technicians
- Regular oil samples (KOWA)
- Eligible for Komatsu Care certification
- Standard on all Tier 4 construction equipment
- Continuous maintenance support with Komtrax remote monitoring system
- One Komatsu Diesel Particulate Filter (KDPF) exchange included for five years/4,500 hours
- One Komatsu selective catalytic reduction (SCR) maintenance services included for five years/4,500 hours, whichever occurs first

**Exclusions apply. Please see your Komatsu dealer for full terms and conditions.*

Komatsu Care Plus

Komatsu Care Plus is a continuation of the Komatsu Care program. Along with regularly scheduled maintenance and national distributor coverage, you get a variety of added benefits, such as major component assurance, a 100% core value guarantee and special financing.



What's included?*

- Available during any machine hour
- Fixed maintenance cost
- National coverage
- Automatic maintenance scheduling
- Genuine parts and certified labor
- 50-point inspection by certified technicians
- Regular oil samples (KOWA)
- Service record history
- Eligible for Komatsu Care certification
- Travel included
- Transferable with machine
- Current Tier 4 production models
- Advanced data analytics with My Komatsu
- Special financing
- 100% core guarantee — you will receive 100% core credit value when machine is covered under program coverage (up to 10,000 hours)
- 10,000-hour major component assurance — proration of any major component that fails within program coverage (up to 10,000 hours)
- Available on new machines or machines already in the field
- Subscription Cost per Hour billing available

*Exclusions apply. Please see your Komatsu dealer for full terms and conditions.

Komatsu Care Plus II

Komatsu Care Plus II includes everything in the Komatsu Care Plus program bundled with comprehensive repair coverage for qualifying repairs. With this program you also get the benefit of fixed maintenance and repair costs, enabling you to better calculate your overall operating budget. Designed to help you minimize your equipment's downtime and maximize your production. This advanced maintenance and repair program must be purchased within 12 months of buying your machine.



What's included?*

- Available up to 12,000 hours
- Fixed maintenance and repair cost
- National coverage
- Automatic maintenance scheduling
- Genuine parts and certified labor
- 50-point inspection by certified technicians
- Regular oil samples (KOWA)
- Service record history
- Eligible for Komatsu Care certification
- Travel included
- Transferable with machine
- Current Tier 4 production models
- Advanced data analytics with My Komatsu
- Special financing
- OEM support
- Diagnostics included
- Premier total repair coverage

**Exclusions apply. Please see your Komatsu dealer for full terms and conditions.*

Komatsu Care Plus III

Komatsu Care Plus III is a comprehensive maintenance, repair and consumables replacement program that simplifies your equipment's total cost of ownership with a fixed cost per hour for qualifying repairs and replacements. You are billed based on your monthly utilization at a cost per hour, which means your pay is directly correlated with your equipment usage. Komatsu Care Plus III is the first program to offer you max coverage for the first life of your machine and include wear items.



Program overview*

- No hidden fees
- Transferable with the machine
- Nationwide coverage
- Cost per hour/monthly payment/total coverage

What's included?

- Repair coverage for the first life of the machine
- Fixed maintenance, repair and consumable cost
- Replacement of consumables
- National coverage
- Automatic maintenance scheduling
- Genuine parts and certified labor
- 50-point inspection by certified technicians
- Regular oil samples (KOWA)
- Service record history
- Eligible for Komatsu Care certification
- Travel included
- Transferable with machine
- Current Tier 4 production models
- Advanced data analytics with My Komatsu
- Cost-per-hour billing
- OEM support
- Diagnostics included

*Please see your Komatsu dealer for full terms and conditions.

Maintenance

Preventive maintenance is the most important factor to ensure that your equipment keeps running with minimal downtime. Factory-recommended maintenance is automatically scheduled by your servicing distributor, including oil sampling analysis, genuine oils and filters, a 50-point inspection and travel.

Repair

Protect your equipment and your wallet by providing comprehensive machine coverage for qualifying failed components with Komatsu Care Plus III. Coverage extends for the life of the contract, giving you peace of mind for 20,000+ hours. Your policy also covers diagnostics, travel and freight costs for large components.

Consumables

Consumables are wear items, such as windshield wipers, filters and batteries. Your Komatsu Care Plus III program includes replacement of a number of consumables to help streamline your operation and take the guess work out of your operating costs. What's more, you can be sure that all consumables are Komatsu genuine parts installed by distributor-certified labor.

Maintenance intervals*

500-hour maintenance	1,000-hour maintenance	2,000-hour maintenance	6,000-hour maintenance
<ul style="list-style-type: none"> • Engine air filter assembly • Transmission oil filter • Engine oil filter • Fuel pre-filter • AC fresh air filter • AC recirc air filter • Fuel main filter • KOWA • Engine oil 	<ul style="list-style-type: none"> • Engine air filter assembly • Transmission oil filter • Engine oil filter • Fuel pre-filter • AC fresh air filter • AC recirc air filter • Fuel main filter • KOWA • Engine oil • O-ring (transmission oil strainer) • O-ring (transmission oil strainer) • Transmission oil 	<ul style="list-style-type: none"> • Engine air filter assembly • Transmission oil filter • Engine oil filter • Fuel pre-filter • AC fresh air filter • AC recirc air filter • Fuel main filter • KOWA • Engine oil • O-rings • Transmission oil • Hydraulic oil filter • Hydraulic tank breather • Diesel exhaust fluid (DEF) pump filter • DEF tank breather • KCCV filter • Axle oil (each) • Hydraulic oil 	<ul style="list-style-type: none"> • Engine air filter assembly • Transmission oil filter • Engine oil filter • Fuel pre-filter • AC fresh air filter • AC recirc air filter • Fuel main filter • KOWA • Engine oil • O-rings • Transmission oil • Hydraulic oil filter • Hydraulic tank breather • Diesel exhaust fluid (DEF) pump filter • DEF tank breather • KCCV filter • Axle oil (each) • Hydraulic oil • Coolant

Repair*

Powertrain	Hydraulics	Electrical	Other
<ul style="list-style-type: none"> • Engine • Transmission • Axles • Steering 	<ul style="list-style-type: none"> • Pumps • Hydraulic motors • Cylinders • Valves 	<ul style="list-style-type: none"> • Electronic controllers • Sensors • Wire harnesses 	<ul style="list-style-type: none"> • Structural • Undercarriage • Engine aftertreatment • Cabin

Consumables*

As needed	Periodic replacements	7,000 to 9,000 hours	12,000 to 15,000 hours
<ul style="list-style-type: none"> • Brakes • Wiper motor • DEF emission related parts • Hydraulic seals • Pins and bushings • Hydraulic hoses 	<ul style="list-style-type: none"> • Wiperblades and wiper blade motor • Batteries • Serptine belts • Safety belt 	<ul style="list-style-type: none"> • Alternator • Starting motor • Cylinder seals • Engine damper • Drive shafts • Universal joints 	<ul style="list-style-type: none"> • Fuel injector assembly • Water pump assembly • Turbocharger • Air conditioning system • Cooling system • DEF emission and related parts

*Varies by model. Coverage shown is an example

Komatsu Care Advantage*

Protect your equipment in the event a covered component fails due to a defect in material or workmanship with a Komatsu Care Advantage, an extended repair coverage program. You can be assured with this program that repairs are performed by Komatsu-trained experts using Komatsu genuine parts.

What are the coverage options?

Powertrain

Ensure that your machine is protected when it comes to expensive powertrain repairs with Powertrain coverage.

Powertrain Plus

Keep your machine running strong with Powertrain Plus, which covers all powertrain components, as well as your machine's hydraulic system.

Premier

You can be sure your machine is protected bumper to bumper with Premier coverage — our most comprehensive machine coverage option available.



Covered Items	PT	PT+	Premier
Suspension			
Electronic control module			●
Suspension cylinders and control valves			●
Suspension control arm assemblies			●
Senders, solenoids and sensors			●
Pipes, tubes, clamps, valves and hoses			●
Electrical system			
Gauges and instruments			●
Wiring harnesses			●
Switches			●
Relays and circuit breakers			●
Start switch			●
Fuse/circuit breaker panel and circuit board			●
Monitor panels			●
Komtrax, VHMS and PLM (payload meter)			●
Electronic controllers			●
Air intake heaters and glow plugs			●
Senders, solenoids and sensors			●
Frames, structures and linkages			
Boom/arm			●
Bell crank and Z bar on wheel loaders			●
Carbody			●
Steel frame (front, rear,sub)/revolving frame			●
Steel of outrigger on backhoe loaders			●
Motor grader circle			●
Undercarriage related parts			
Bogie assemblies			●
Equalizer bar			●
H.I.C. assemblies			●
Pivot shaft assembly			●
Recoil springs			●
Track adjusters			●
Track roller frame			●
Hybrid systems			
Capacitor/inverter	●	●	●
Generator/motor	●	●	●
Hybrid controller	●	●	●
Lubrication pump	●	●	●
Radiator	●	●	●
Swing motor			●
Water pump	●	●	●
Wiring harness	●	●	●
Intelligent Machine Control system			
GNSS and GPS antenna(s), GNSS receiver/controller, GNSS			●
Control box and ICT controller			●
IB monitor			●
Sensors and encoders			●
Engine and related parts			
Engine assembly internal components	●	●	●
Engine oil related			
Cooler	●	●	●
Engine filter mount	●	●	●
Remote make-up oil tanks		●	●
Remote mounted oil filtration system		●	●
Valves	●	●	●
Hose clamps and hoses			●

*Exclusions apply. Please see your Komatsu dealer for full terms and conditions.

Covered Items	PT	PT+	Premier
Air intake and exhaust related			
Air cleaner housing and after coolers			●
Inter coolers			●
Turbo charger	●	●	●
Intake and exhaust manifolds	●	●	●
EGR valve and cooler	●	●	●
Mufflers			●
Senders, solenoids and sensors	●	●	●
Pipes, tubes, clamps, hoses			●
Fuel related			
Fuel tank assembly and mounting			●
Fuel filter mounts	●	●	●
Fuel transfer, auxiliary, lift and injection pumps	●	●	●
Fuel coolers	●	●	●
Injectors	●	●	●
Fuel manifolds/valves	●	●	●
Senders, solenoids and sensors	●	●	●
Pipes, tubes, clamps and hoses			●
Engine mounted components			
AC compressor/condenser			●
Alternator and starter	●	●	●
Damper and vibration damper	●	●	●
Power take off	●	●	●
Belt tensioner	●	●	●
Flywheel and flywheel housing	●	●	●
Heat shielding and framework			●
Engine electrical components			
Senders, solenoids and sensors	●	●	●
Electronic control modules	●	●	●
Engine wiring harness	●	●	●
Aftertreatment system			
KDPF assembly			●
HC and DEF dosing nozzles			●
SCR assembly			●
KCCV assembly			●
Senders, solenoids and sensors			●
Pipes, tubes, clamps and hoses			●
DEF mixing tube			●
Other DEF system related			
Tank			●
Heater, pump and tank heater valve			●
Pump controller			●
Senders, solenoids and sensors			●
Pipes, tubes, clamps and hoses			●
Power transmitting system			
Transmission	●	●	●
Transmission and torque converters	●	●	●
Torque flow assembly/power module	●	●	●
Hydrostatic pumps and motors	●	●	●
Control and PPC valves	●	●	●
Oil coolers, tanks and reservoirs	●	●	●
Oil filter mount	●	●	●
Electronic control module	●	●	●
Senders, solenoids and sensors	●	●	●
Steering and transfer cases	●	●	●
Damper	●	●	●
Swing gear box	●	●	●
Pipes, tubes, clamps and hoses			●

Covered Items	PT	PT+	Premier
Drive line			
Axles and axle housings	●	●	●
Axle mounting and oscillation	●	●	●
Differentials and final drives	●	●	●
Wheel/rim			●
Valves	●	●	●
Pipes, tubes, clamps and hoses			●
Steering (eligibility under the PT coverage type applies to track machines only)			
Steering clutch	●	●	●
Steering clutch and brake control valve	●	●	●
Steering pump and emergency steering pump	●	●	●
Steering oil cooler	●	●	●
Steering valves	●	●	●
Steering box	●	●	●
Steering linkage, column and console			●
Tie rod			●
Senders, solenoids and sensors			●
Pipes, tubes, clamps and hoses			●
Braking system			
Brake primary and secondary cylinders			●
Brake pump and emergency brake pump			●
Wet brake assemblies	●	●	●
Brake oil cooler assemblies	●	●	●
Brake oil cooler fan, pump and motor	●	●	●
Brake caliper			●
Accumulators			●
Tanks and reservoirs			●
Electronic control modules			●
Senders, solenoids and sensors			●
Pipes, tubes, clamps and hoses			●
Cooling system			
Radiator			●
Expansion tank			●
Thermostat	●	●	●
Cooling fan, fan drive and shrouding	●	●	●
Water pump	●	●	●
Senders, solenoids and sensors	●	●	●
Pipes, tubes, clamps and hoses			●
Hydraulic systems			
Non-propulsion hydraulic pumps and motors		●	●
Hydraulic cylinders		●	●
Hydraulic valve and controls		●	●
Electronic control modules		●	●
Hydraulic accumulators		●	●
Hydraulic oil coolers and cooling fans		●	●
Swivels (rotary manifolds)		●	●
Swing motor		●	●
Hydraulic oil filter assembly		●	●
Hydraulic tanks		●	●
Senders, solenoids and sensors		●	●
Pipes, tubes, clamps and hoses		●	●

Komatsu Care Plus programs



Bulldozers

	Plus	Plus II	Plus III
Oils			
Change coolant	●	●	●
Change engine oil	●	●	●
Change final drive oil	●	●	●
Change hydraulic oil	●	●	●
Filters			
Replace engine oil filters	●	●	●
Pre fuel filters	●	●	●
A/C fresh and recirculation filter	●	●	●
Replace engine air filters	●	●	●
Replace fuel main filter	●	●	●
Replace engine lube oil filter	●	●	●
Replace hydraulic filter	●	●	●
Replace HST filters	●	●	●
KCCV filters	●	●	●
DEF pump filter	●	●	●
Breather elements			
Replace fuel tank breather element	●	●	●
Replace DEF tank breather element	●	●	●
Replace hydraulic tank breather element	●	●	●
Other			
Reset monitor panel	●	●	●
Lubricate machine	●	●	●
Drain sediment from fuel tank	●	●	●
Clean hydraulic tank strainer	●	●	●
Repairs			
Engine		●	●
Aftertreatment system		●	●
Cooling system		●	●
Transmission/hydrostatic		●	●
Powertrain drive line		●	●
Braking system		●	●
Steering system		●	●
Hydraulic systems		●	●
Electrical systems		●	●
Frames and structural		●	●
Undercarriage related components		●	●
Intelligent machine controls		●	●
Genuine parts		●	●
Certified labor		●	●
Diagnostics		●	●
Travel		●	●
Consumables			
Fuel injection system			●
Water pump			●
Starter			●
Alternator			●
Batteries			●
A/C system			●
Equipment cooling system			●
Brakes			●
Aftertreatment filters			●
Seals			●
Hoses			●
Gaskets			●
Pins and bushings			●
V belt			●
Wiper blades			●
Wiper motors			●



Excavators

	Plus	Plus II	Plus III
Oils			
Change coolant	●	●	●
Change engine oil	●	●	●
Change hydraulic oil	●	●	●
Change final drive oil	●	●	●
Change swing machinery oil	●	●	●
Change damper case oil	●	●	●
Filters			
Replace engine air filter	●	●	●
Replace engine oil filter	●	●	●
A/C fresh and recirculation air filters	●	●	●
Fuel main filter	●	●	●
Replace DEF pump filter	●	●	●
Replace hydraulic oil filter element	●	●	●
Replace KCCV filter element	●	●	●
Breather elements			
Replace air cleaner element	●	●	●
Replace hydraulic tank breather element	●	●	●
Replace DEF tank breather element	●	●	●
Other			
Reset monitor panel	●	●	●
Lubricate machine	●	●	●
Lubricate swing circle	●	●	●
Check swing pinion grease	●	●	●
Drain sediment from fuel tank	●	●	●
Clean hydraulic tank strainer	●	●	●
Repairs			
Engine		●	●
Aftertreatment system		●	●
Cooling system		●	●
Hydrostatic system		●	●
Braking system		●	●
Hydraulic systems		●	●
Electrical systems		●	●
Frames and structural		●	●
Undercarriage related components		●	●
Intelligent machine controls		●	●
Genuine parts		●	●
Certified labor		●	●
Diagnostics		●	●
Travel		●	●
Consumables			
Fuel injection system			●
Water pump			●
Starter			●
Alternator			●
Batteries			●
A/C system			●
Equipment cooling system			●
Brakes			●
Aftertreatment filters			●
Seals			●
Hoses			●
Gaskets			●
Pins and bushings			●
V belt			●
Wiper blades			●
Wiper motors			●

Komatsu Care Plus programs



Motor graders

	Plus	Plus II	Plus III
Oils			
Change coolant	●	●	●
Change engine oil	●	●	●
Change transmission case oil	●	●	●
Change final drive case oil	●	●	●
Change hydraulic oil	●	●	●
Check circle rotation gear case oil	●	●	●
Check tandem case oil	●	●	●
Filters			
Replace engine oil filters	●	●	●
Replace fuel pre filter	●	●	●
Replace fuel main filter	●	●	●
Replace engine air filter	●	●	●
A/C fresh and recirculation filters	●	●	●
Replace hydraulic oil filter	●	●	●
Replace transmission oil filter	●	●	●
Replace KCCV filter	●	●	●
Replace DEF pump filter	●	●	●
Breather elements			
Replace final drive breather	●	●	●
Replace transmission breather	●	●	●
Replace DEF breather	●	●	●
Replace hydraulic tank breather	●	●	●
Other			
Reset monitor panel	●	●	●
Clean hydraulic tank strainer	●	●	●
Repairs			
Engine		●	●
Aftertreatment system		●	●
Cooling system		●	●
Transmission		●	●
Powertrain drive line		●	●
Braking system		●	●
Steering system		●	●
Hydraulic systems		●	●
Electrical systems		●	●
Frames and structural		●	●
Genuine parts		●	●
Certified labor		●	●
Diagnostics		●	●
Travel		●	●
Consumables			
Fuel injection system			●
Water pump			●
Starter			●
Alternator			●
Batteries			●
A/C system			●
Equipment cooling system			●
Brakes			●
Aftertreatment filters			●
Seals			●
Hoses			●
Gaskets			●
Pins and bushings			●
V belt			●
Wiper blades			●
Wiper motors			●



Articulated trucks

	Plus	Plus II	Plus III
Oils			
Drain oil from floating seal	●	●	●
Change engine oil	●	●	●
Change transmission and brake oil	●	●	●
Change final drive oil	●	●	●
Change differential case oil	●	●	●
Filters			
Replace engine air filters	●	●	●
Replace engine oil filter	●	●	●
A/C fresh and recirculation air filters	●	●	●
Replace fuel pre-filter cartridge	●	●	●
Replace fuel main filter	●	●	●
Replace transmission oil filters	●	●	●
Replace brake oil filter	●	●	●
Replace hydraulic oil filter element	●	●	●
Replace DEF pump filter	●	●	●
Replace KCCV filter element	●	●	●
Breather elements			
Replace fuel tank breather element	●	●	●
Replace DEF tank breather	●	●	●
Replace hydraulic tank breather element	●	●	●
Other			
Reset monitor panel	●	●	●
Drain sediment from fuel tank	●	●	●
Repairs			
Engine		●	●
Aftertreatment system		●	●
Cooling system		●	●
Transmission		●	●
Powertrain drive line		●	●
Braking system		●	●
Steering system		●	●
Hydraulic systems		●	●
Electrical systems		●	●
Frames and structural		●	●
Genuine parts		●	●
Certified labor		●	●
Diagnostics		●	●
Travel		●	●
Consumables			
Fuel injection system			●
Water pump			●
Starter			●
Alternator			●
Batteries			●
A/C system			●
Equipment cooling system			●
Brakes			●
Aftertreatment filters			●
Seals			●
Hoses			●
Gaskets			●
Pins and bushings			●
V belt			●
Wiper blades			●
Wiper motors			●

Komatsu Care Plus programs



Rigid trucks

	Plus	Plus II	Plus III
Oils			
Change engine oil	●	●	●
Change steering and transmission brake oil	●	●	●
Change rear differential oil	●	●	●
Change rear final drive oil	●	●	●
Filters			
A/C fresh and recirculation air filters	●	●	●
Replace engine oil filter	●	●	●
Replace fuel main filter	●	●	●
Replace fuel pre filter	●	●	●
Replace engine air filters	●	●	●
Replace transmission oil filters	●	●	●
Replace steering and hoist oil filter	●	●	●
Replace transmission and brake cooling oil filter	●	●	●
Replace KCCV filter element	●	●	●
Breather elements			
Solvent wash hydraulic tank breather	●	●	●
Solvent wash differential case breather	●	●	●
Other			
Reset monitor panel	●	●	●
Replace air filter assembly	●	●	●
Replace oil filters and backup ring	●	●	●
Solvent wash transmission strainer	●	●	●
Grease machine hinge points	●	●	●
Repairs			
Engine		●	●
Aftertreatment system		●	●
Cooling system		●	●
Transmission		●	●
Powertrain drive line		●	●
Braking system		●	●
Steering system		●	●
Hydraulic systems		●	●
Electrical systems		●	●
Frames and structural		●	●
Genuine parts		●	●
Certified labor		●	●
Diagnostics		●	●
Travel		●	●
Consumables			
Fuel injection system			●
Water pump			●
Starter			●
Alternator			●
Batteries			●
A/C system			●
Equipment cooling system			●
Brakes			●
Aftertreatment filters			●
Seals			●
Hoses			●
Gaskets			●
Pins and bushings			●
V belt			●
Wiper blades			●
Wiper motors			●



Wheel loaders

	Plus	Plus II	Plus III
Oils			
Change coolant	●	●	●
Change engine oil	●	●	●
Change oil in transfer case	●	●	●
Change hydraulic oil	●	●	●
Change front and rear axle oil	●	●	●
Filters			
Replace engine oil filters	●	●	●
Replace fuel pre filter	●	●	●
Replace engine air filter	●	●	●
A/C fresh and recirculation air filters	●	●	●
Replace fuel main filter	●	●	●
Replace HST oil filter	●	●	●
Replace DEF pump filter	●	●	●
Replace KCCV filter element	●	●	●
Breather elements			
Check and clean fuel breather element	●	●	●
Replace hydraulic tank breather element	●	●	●
Other			
Reset monitor panel	●	●	●
Check and clean air cleaner	●	●	●
Lubricate rear axle pivot pin	●	●	●
Lubricate machine	●	●	●
Drain sediment from fuel tank	●	●	●
Clean transfer case strainer	●	●	●
Clean transfer case breather	●	●	●
Lubricate center hinge pin	●	●	●
Repairs			
Engine		●	●
Aftertreatment system		●	●
Cooling system		●	●
Transmission		●	●
Powertrain drive line		●	●
Braking system		●	●
Steering system		●	●
Hydraulic systems		●	●
Electrical systems		●	●
Frames and structural		●	●
Genuine parts		●	●
Certified labor		●	●
Diagnostics		●	●
Travel		●	●
Consumables			
Fuel injection system			●
Water pump			●
Starter			●
Alternator			●
Batteries			●
A/C system			●
Equipment cooling system			●
Brakes			●
Aftertreatment filters			●
Seals			●
Hoses			●
Gaskets			●
Pins and bushings			●
V belt			●
Wiper blades			●
Wiper motors			●

Komatsu Care Plus programs



Mining dozers

	Plus	Plus II	Plus III
Oils			
Change coolant	●	●	●
Change engine oil	●	●	●
Change final drive oil	●	●	●
Change hydraulic oil	●	●	●
Filters			
Replace engine oil filters	●	●	●
Pre fuel filters	●	●	●
A/C fresh and recirculation filter	●	●	●
Engine air filters	●	●	●
Replace fuel main filter	●	●	●
Replace engine lube oil filter	●	●	●
Replace hydraulic filter	●	●	●
Replace HST filters	●	●	●
KCCV filters	●	●	●
DEF pump filter	●	●	●
Breather elements			
Replace fuel tank breather element	●	●	●
Replace DEF tank breather element	●	●	●
Replace hydraulic tank breather element	●	●	●
Other			
Reset monitor panel	●	●	●
Lubricate machine	●	●	●
Drain sediment from fuel tank	●	●	●
Clean hydraulic tank strainer	●	●	●
Repairs			
Engine		●	●
Aftertreatment system		●	●
Cooling system		●	●
Transmission/hydrostatic		●	●
Powertrain drive line		●	●
Braking system		●	●
Steering system		●	●
Hydraulic systems		●	●
Electrical systems		●	●
Frames and structural		●	●
Undercarriage related components		●	●
Intelligent machine controls		●	●
Genuine parts		●	●
Certified labor		●	●
Diagnostics		●	●
Travel		●	●

	Plus	Plus II	Plus III
Consumables			
Turbo charger			●
EGR valve and cooler			●
Fuel injection system			●
Alternator			●
Motor starter			●
V belt			●
KDPF assembly			●
Drive shaft			●
Brakes			●
Equipment cooling system			●
Radiator			●
Water pump			●
Hydraulic cylinders			●
Suspension cylinders			●
Batteries			●
Wiper motors			●
Wiper blades			●
Seatbelts			●
Undercarriage (optional*)			●

*For more information on undercarriage coverage contact your distributor.

Financing solutions

One price, no hidden fees nationwide



Rates as low as*

0%

Three skips available**

Why finance your support program?

Komatsu's nationwide coverage and aggressive financing rates means no matter where you service your machine, your costs will always be the same.

What are the finance terms?

To get the most attractive rates and terms, you need to finance the product support programs you want at the time you purchase your machine.

If you decide to finance any product support programs after purchasing your machine, your eligible rate is 15 months at 0% with three upfront skips available.

New machines	Machines in field
3% for 48 months	2% for 15 months
4% for 60 months	3% for 48 months
Minimum purchase \$4,000	
Maximum purchase \$100,000	

**Subject to credit review. Rates are subject to change without notice. Terms and conditions apply. For more information contact your local dealer representative for seasonal finance specials.*

***Available to qualifying customers*

My Komatsu

Your fleet at your fingertips

Stay connected to your fleet and your business no matter where you are. My Komatsu is your online portal that provides an array of insightful information about your machine and convenient parts ordering.

Now you can monitor your Komatsu product support program in real time and have access to all your service history, program details and current coverage.



What can My Komatsu do for you?

Program coverage

My Komatsu gives you the ability to view your current Komatsu coverage, maintenance claims, program utilization, and take action on expiring coverage. You can also access your service records, such as oil sampling and your Komatsu Care report.

Request a quote

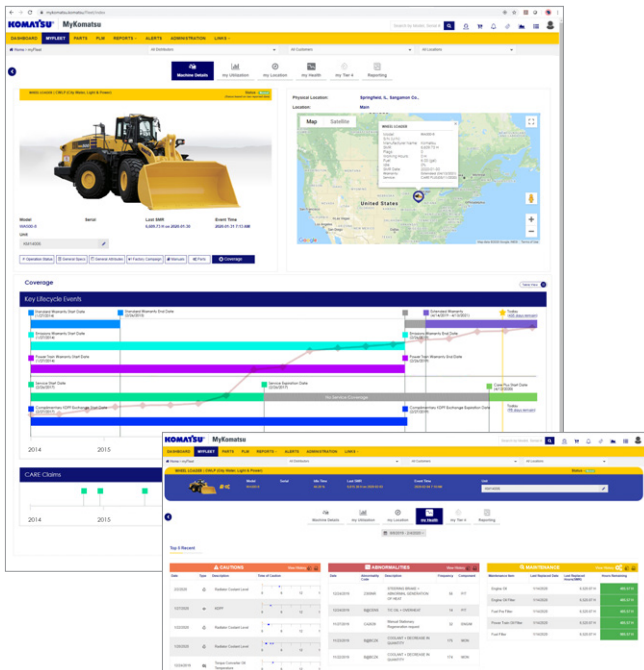
My Komatsu allows you to view the program brochures that apply to your equipment and request a quote directly from your servicing distributor.

Make the most of telematics data

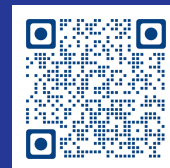
My Komatsu helps you easily access telematics reports even when you have a mixed fleet by making it easy to collect, visualize and monitor telematics data from both Komatsu machines and other OEM machines with ISO API 15143-3 (AEMP 2.0) integration. You can put these powerful analytics to work without a complicated process or expensive third-party solutions.

Monitor your machine health

You can easily monitor your machine's health via telematics, order any necessary parts and have your parts delivered directly to your job site.



Register and login to
mykomatsu.komatsu



Komatsu Used and Komatsu Certified

To qualify for the Komatsu Certified seal of approval, your machine must meet a rigorous series of prerequisites and undergo multiple enhancement procedures. These include comprehensive repair inspection, full-service routine, performance evaluation, thorough cleaning and detailing, collected work order histories and more. As an equipment seller, you'll experience a higher resale and trade-in value. As a buyer, you can be sure you're getting high-quality, premium used equipment.

For sellers

When you sell or trade in your Komatsu equipment you can generally receive up to a 10% increase in resale value.

up to 10%
higher resale values*

Our data to market history supports machines with complete service histories, genuine parts, and certified labor. Your machine might qualify for Komatsu Certified trade in. Our product support programs provide you the service history required to get a premium resale value.



**Up to a 10% higher residual than machines not Komatsu Certified.*

For buyers

When you purchase a Komatsu Certified machine, you'll get detailed reports and full maintenance logs, so you can be sure your new acquisition has been well taken care of. You'll also get:

- Competitive financing
- Powertrain warranty
- Maintenance and repair history
- Komatsu diesel particulate filter exchange
- Komtrax performance data, fuel economy data, including fuel consumption
- Komatsu oil and wear analysis results

Which machines are eligible?

- Komatsu Care Plus machines
- Komatsu Care Plus II machines
- Komatsu Care Plus III machines
- Only machines that have met all Komatsu Care maintenance requirements are eligible for certification:
 - 50-point inspection every 500 hours up to three years / 2,000 hours
 - KOWA oil and wear analysis with no abnormal or critical indication
 - 100+-point mechanical and diagnostic operations as well as interior and exterior appearance standards required for certification
 - Maintenance and certification performed by factory-trained technicians using genuine Komatsu parts

Komatsu Genuine Parts

Komatsu Genuine Parts and support programs are designed to help you to reduce downtime, optimize performance, lower total cost of ownership, and extend machine life. Gain peace of mind for you and your personnel by using carefully designed products.

- High-quality products specifically engineered for your machine
- Supported by Komatsu and its distributor network
- 24/7 accessibility for parts ordering, machine health statistics and parts books through My Komatsu

Payment and early cancellation

Komatsu Care programs are billed at a cost per operating hour, based on monthly utilization. The programs empower you to manage your equipment's operating expenses or pinpoint cost per tonnage. After a one-time activation payment, you can select from an average cost per hour or an incremental cost per hour. Every month we'll track the number of hours your equipment runs and multiply it by your selected cost-per-hour figure to determine your monthly billing. It's that easy.

Initiating payment is an easy three-step process:

1. Make a one-time activation payment to initiate coverage
2. Pick from a fixed average cost per hour or an incremental cost per hour
3. Your billing will start 60 days from activation and billing continues every 30 days after that, based on your previous month's machine utilization at your selected cost per hour

Komatsu Care programs can be canceled any time after the minimum utilization of 3,000 hours. If you decide to cancel at any point after that, simply let us know. At that time, you will only be responsible for the previous month's payment and you will stop being billed. There are no fees for early cancellation; coverage will terminate 30 days after you notify us.

Cost per hour

Cost per hour billing allows you to subscribe to a fixed hourly rate and be billed every month while coverage is active. The hourly rate won't change once coverage is active for a duration of time, which allows you to protect and control your equipment's operating expenses. Cost per hour billing is available on select programs. Contact your servicing distributor for more information, or login to your My Komatsu to find out more for your specific equipment.

Incremental purchases for Komatsu Care Plus and Plus II

Komatsu Care Plus and Komatsu Care Plus II contracts offer the ability to incrementally purchase contracts. This allows our customers better flexibility in purchasing smaller contracts and extending current coverage as they see fit.

**Please see your Komatsu dealer for full terms and conditions.*



Resources



Scan here
or click on the link below
to discover more about our
maintenance and repair programs



komatsu.com/maintenance-repair

Product designs, specifications and/or data in this document are provided for informational purposes only and are not warranties of any kind. Product designs and/or specifications may be changed at any time without notice. The only warranties that apply to sales of products and services are Komatsu's standard written warranties, which will be furnished upon request.

Komatsu and other trademarks and service marks used herein are the property of Komatsu Ltd., Komatsu America Corp., Komatsu Mining Corp., or one of their affiliates, or the respective owners or licensees.

© 2022 Komatsu America Corp. All rights reserved.

AESB351-02

07/22 (EV-01)

KOMATSU

komatsu.com